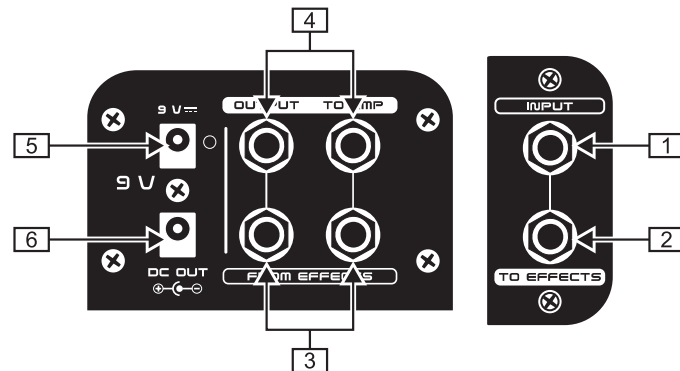
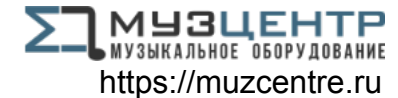


PEDAL BOARD PB1000/PB600



Thank you for showing your confidence in us by purchasing the BEHRINGER PEDAL BOARD PB1000/PB600. This high-quality lightweight pedal board is able to transport up to 12 (PB1000) or up to 6 (PB600) pedals. The onboard 1.7 A power supply includes all necessary cabling for powering your collection of stompboxes.



CONNECTIONS

- 1 Use this 1/4" TS INPUT connector to plug in the instrument cable. Please use only a high-quality instrument cable here.
- 2 The 1/4" TS TO EFFECTS connector sends the signal to your effects pedals.
- 3 Use these 1/4" TS FROM EFFECTS connectors to plug in the stereo effects signal from your effects pedals.
- 4 These 1/4" TS OUTPUT TO AMP connectors send the signal to your amp(s).
- 5 Use the 9V connection to plug in the included 9V power supply.
- 6 Use the DC OUT connector to plug in the included daisy chain cable and connect it to all effects pedals.

SAFETY INSTRUCTIONS

Do not use near water, or install near heat sources. Use only authorized attachments/accessories. Do not service product yourself. Contact our qualified servicing personnel for servicing or repairs, **especially when power supply cord or plug is damaged.**

Ne експлуатируйте прибор вблизи от источников воды и тепла. Применяйте только авторизованные дополнительные устройства. Никогда не ремонтируйте прибор самостоятельно. Ремонт может производить только квалифицированный специализированный персонал, **особенно при повреждениях сетевого провода или сетевой вилки.**

Μη χρησιμοποιείτε τη συσκευή κοντά σε νερό και μην την εγκαθιστάτε κοντά σε πηγές θερμότητας. Χρησιμοποιείτε μόνο εγκεκριμένα εξαρτήματα/παρελκόμενα. Μην εκτελείτε οι ίδιοι εργασίες σέρβις. Για την εκτέλεση εργασιών σέρβις ή επισκευής, επικοινωνήστε με το ειδικευμένο προσωπικό σέρβις της εταιρείας μας, **ιδιαίτερα όταν έχει προκληθεί ζημιά στο καλώδιο ή το βύσμα παροχής ρεύματος.**

Må ikke anvendes i nærheden af vand eller installeres i nærheden af varmeeenheder. Brug kun godkendte tilslutninger/tilbehør. Forsøg ikke selv at reparere produktet. Kontakt vores kvalificerede servicepersonale for at få udført service og reparation, **især hvis strømforsyningsledningen eller stikket er beskadiget.**

Non usare in prossimità dell'acqua o installare vicino a fonti di calore. Usare solo collegamenti ed accessori approvati. Non tentare di riparare l'apparecchio da sé. Contattare il nostro personale specializzato per eseguire operazioni di manutenzione e riparazione, **in particolare se i cavo di alimentazione e la spina sono danneggiati.**

Niet gebruiken in de buurt van water of warmtebronnen. Gebruik uitsluitend geautoriseerde uitbreidingen/originele accessoires. Probeer nooit zelf het apparaat te repareren. Neem voor reparaties of onderhoud contact op met de leverancier, **met name wanneer het netsnoer of de stekker van het netsnoer beschadigd is.**

Nie używać w pobliżu wody ani nie instalować w pobliżu źródeł ciepła. Stosować wyłącznie dodatki/akcesoria dopuszczone przez producenta. Nie naprawiać urządzenia samodzielnie. Serwisowanie i naprawy zlecać naszemu wykwalifikowanemu personelowi, **szczególnie w przypadku uszkodzeń przewodu lub wtyku sieciowego.**

Não utilize na proximidade de água, nem instale perto de fontes de calor. Use apenas conexões e acessórios autorizados. Não repare o seu produto. Contacte o nosso pessoal qualificado para consertos ou reparações, **especialmente se o cabo ou a tomada de alimentação estiverem danificados.**

Får inte användas i närheten av vatten eller installeras nära värmekällor. Använd endast godkända delar/tilbehör. Utför aldrig själv någon service på produkten. Kontakta vår kvalificerade servicepersonal för service eller reparationer, **särskilt om det förekommer skador på strömkabeln eller stickkontakten.**

Älä käyttää laitetta veden tai lämmönlähteiden lähellä. Käytä vain hyväksytyjä lisävarvikkeita. Älä tee laitteeseen itse minkäänlaisia korjauksia. Ainoastaan pätevä ammattihenkilökunta saa suorittaa korjaukset; tämä koskee **erityisesti vaurioituneita verkkokaapeleita tai -pistokkeita.**

水分の近くや、ヒーターなど熱気のある場所では使用しないでください。正式に認可された付属品のみを使用してください。製品はご自分では決して修理せず、特に電源コードもしくはプラグが損傷した場合には、必ず製品サービスおよびリペアの資格を有した当社の担当員にご相談ください。

不要在靠近水源的地方使用，或在靠近热源的地方安装。只使用经过许可的附件 / 配件。不要自己进行产品维修，**尤其是当电源线或插座损坏的时候**，请联系我们的专业服务人员有关产品维修事宜。

Die deutsche Anleitung ist erhältlich @ www.behringer.com
 Manuel francophone en téléchargement sur www.behringer.com
 Manual en español disponible en www.behringer.com
 Manuali italiani disponibili @ www.behringer.com
 Русскоязычное руководство @ www.behringer.com
 Polska instrukcja dostępna jest pod adresem @ www.behringer.com
 Nederlandse handleiding beschikbaar @ www.behringer.com

Suomenkielinen käyttöohje saatavilla osoitteesta www.behringer.com
 Svensk manual finns tillgänglig på www.behringer.com
 Dansk vejledning findes på www.behringer.com
 Manual português disponível @ www.behringer.com
 Ελληνικό εγχειρίδιο υπάρχει διαθέσιμο στη διεύθυνση www.behringer.com
 日本語版マニュアル @ www.behringer.com
 使用说明书可在 www.behringer.com 下载

WARRANTY

For our current warranty terms, please refer to our website at www.behringer.com.

SPECIFICATIONS

Connectors	1/4" TS, unbalanced
Power supply	9V, 1.7 A switching adaptor (included)
USA/Canada 120V~, 60 Hz	GPE182-090170-1 (HSB-UL)
Europe/Australia 230V~, 50 Hz	GPE182-090170-2 (HSB-EU)
U.K.	GPE182-090170-3 (HSB-UK)
Korea 220V~, 60 Hz	GPE182-090170-4 (HSB-SAA)
China 220V~, 50 Hz	GPE182-090170-5 (HSB-CCC)
Japan 100V~, 50/60 Hz	GPE182-090170-6 (HSB-JP)
Power connector	2 mm DC Jack, center negative (with daisy-chain cable included)
Power consumption	2 mA
Dimensions (H x W x D)	
PB1000	504.3 mm (19 7/8") x 663.6 mm (26 1/8") x 115 mm (4 1/2")
PB600	329 mm (13") x 663.6 mm (26 1/8") x 115 mm (4 1/2")
Weight	
PB1000	approx. 5.33 kg (11.8 lbs) including PSU & daisy chain
PB600	approx. 3.8 kg (8.4 lbs.) including PSU & daisy chain

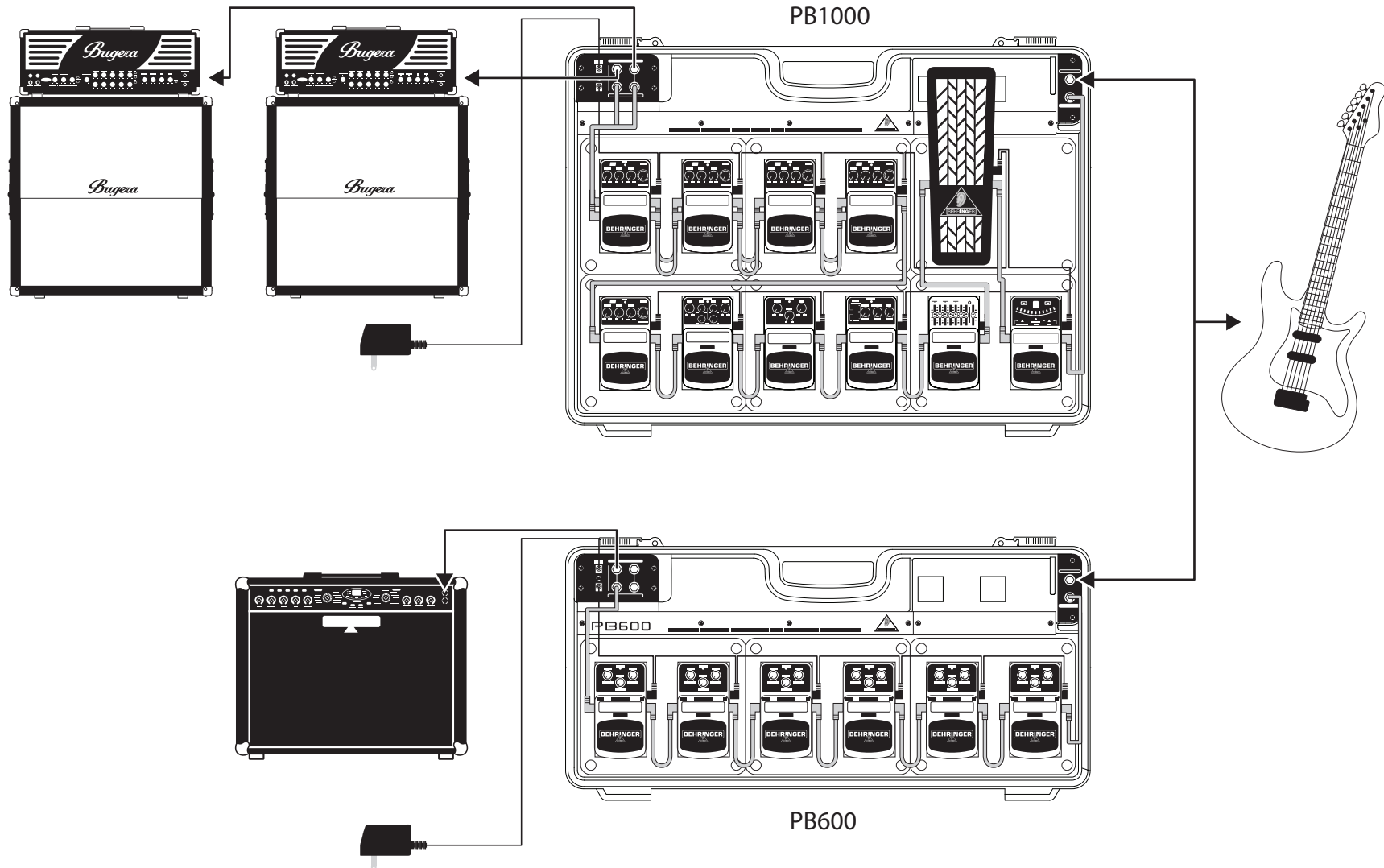
BEHRINGER is constantly striving to maintain the highest professional standards. As a result of these efforts, modifications may be made from time to time to existing products without prior notice. Specifications and appearance may therefore differ from those listed or shown.

PEDAL BOARD PB1000/PB600



APPLICATION EXAMPLE

(Products shown not included except PB1000/PB600)



Technical specifications and appearance subject to change without notice. The information contained herein is correct at the time of printing. BEHRINGER accepts no liability for any loss which may be suffered by any person who relies either wholly or in part upon any description, photograph or statement contained herein. Colours and specification may vary slightly from product. Products are sold through our authorised dealers only. Distributors and dealers are not agents of BEHRINGER and have absolutely no authority to bind BEHRINGER by any express or implied undertaking or representation. No part of this manual may be reproduced or transmitted in any form or by any means, electronic or mechanical, including photocopying and recording of any kind, for any purpose, without the express written permission of BEHRINGER International GmbH. BEHRINGER, the BEHRINGER logo and JUST LISTEN are trademarks of BEHRINGER. ALL RIGHTS RESERVED. © 2008 BEHRINGER International GmbH, Hanns-Martin-Schleyer-Str. 36-38, 47877 Willich, Germany. Tel. +49 2154 9206 0, Fax +49 2154 9206 4903

FEDERAL COMMUNICATIONS COMMISSION COMPLIANCE INFORMATION



Responsible party name: **MUSIC Group Services USA, Inc.**
Address: **18912 North Creek Parkway,
Suite 200 Bothell, WA 98011,
USA**
Phone/Fax No.: **Phone: +1 425 672 0816
Fax: +1 425 673 7647**

PEDAL BOARD PB1000/PB600

complies with the FCC rules as mentioned in the following paragraph:

This equipment has been tested and found to comply with the limits for a Class B digital device, pursuant to part 15 of the FCC Rules. These limits are designed to provide reasonable protection against harmful interference in a residential installation. This equipment generates, uses and can radiate radio frequency energy and, if not installed and used in accordance with the instructions, may cause harmful interference to radio communications. However, there is no guarantee that interference will not occur in a particular installation. If this equipment does cause harmful interference to radio or television reception, which can be determined by turning the equipment off and on, the user is encouraged to try to correct the interference by one or more of the following measures:

- Reorient or relocate the receiving antenna.
- Increase the separation between the equipment and receiver.
- Connect the equipment into an outlet on a circuit different from that to which the receiver is connected.
- Consult the dealer or an experienced radio/TV technician for help.

This device complies with Part 15 of the FCC rules. Operation is subject to the following two conditions:

- (1) this device may not cause harmful interference, and
- (2) this device must accept any interference received, including interference that may cause undesired operation.

Important information:

Changes or modifications to the equipment not expressly approved by MUSIC Group can void the user's authority to use the equipment.